

# THE PROJECT MODULE

# 10x6



**ULTRA-LIGHTWEIGHT**  
Only 3.3 kg/m<sup>2</sup>



**HIGH-EFFICIENCY SILICON CELL**  
Monocrystalline cells  
No thin film!



**UNIQUE "LOW DEGRADATION" WARRANTY**  
Minimum 85 % yield after 40 years



**PATENTED MULTI-LAYER  
CELL ENCAPSULATION**  
Maximal microcrack protection  
Increased longevity



**ETFE FRONT SHEET**  
Soil-repellent (high self-cleaning effect)  
UV & salt resistant  
Optimal heat dissipation



**HIGH YIELD IN ANY POSITION**  
Multi-directional lens structure



**BENDABLE**  
Smallest bending diameter (2 m)



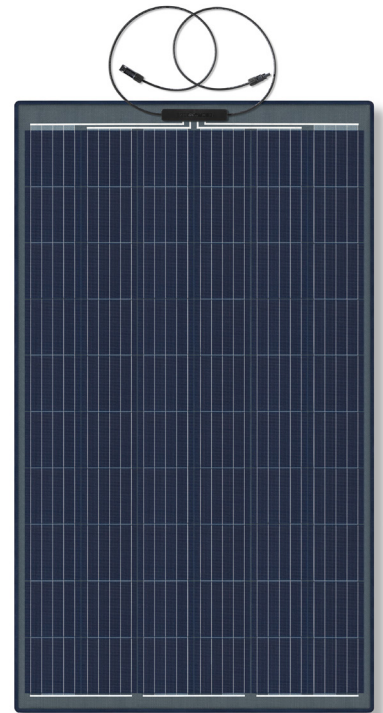
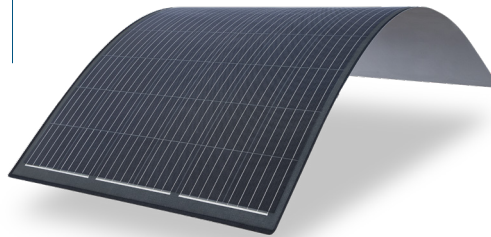
**EASY TO INSTALL**  
Simple but strong adhesive bonding  
No metal subsystem required  
No ballast required



**TAILOR-MADE OPTIONS AVAILABLE**  
Sizing to your requirement  
Transparent back sheet



**EXTREME WEATHER CONDITIONS**  
Even in heat, sandstorms and dusty  
conditions, the module provides stable  
and durable performance



## THERMAL CHARACTERISTICS

Operating temperature range	-40°C to +85°C
Temperature coefficient P <sub>mpp</sub>	-0.38 % / °C
Temperature coefficient V <sub>oc</sub>	-0.36 % / °C
Temperature coefficient I <sub>sc</sub>	+0.07 % / °C

## TECHNICAL DATA

Solar cells	5BB monocrystalline solar cells
Maximum system voltage	1000 V
Maximum overcurrent protection rating	20 A
I <sub>sc</sub>	9.28 A
I <sub>mp</sub>	8.86 A
Weight	3.3 kg/m <sup>2</sup>
Front sheet	Soil-repellent ETFE
Encapsulation	Patented fiberglass-reinforced plastic
Back sheet	High-resistance PET
Junction box	TÜV-certified (IP67/68) with bypass diodes
Cables	2 x 4 mm <sup>2</sup>
Connector	PV4-S

# THE PROJECT MODULE 10x6



## 10 x 6 M RJB / 10 x 6 M FJB

Name	Power	Solar cells	Module length	Module width	Voc (V)	Vmp (V)	Imp (A)	Isc (A)
10x6 M RJB	300 Wp	60	1,756 mm	1,020 mm	41.26	34.18	8.86	9.28
10x6 M FJB	300 Wp	60	1,756 mm	1,020 mm	41.26	34.18	8.86	9.28

RJB = rear junction box      FJB = front junction box



Rooftop installation DAS Energy Headquarters

### APPLICATIONS

Building-integrated and building-applied PV (rooftop, facade), special applications

### POWER RANGE 20 - 350 Wp

Tolerances\*  
 ≥ 250 Wp: - 0 / + 10 W  
 < 250 Wp: - 5 / + 5 W  
 Ics: +/- 10 %  
 Voc: +/- 10 %

\* all electrical data at STC  
 (1.000 W/m<sup>2</sup>, 25 +/- 2 °C,  
 AM 1.5 according to IEC 60904-3)

### HIGH RELIABILITY

IEC 61730 | IEC 61215  
 IEC 62804-1 Potential-induced degradation  
 IEC 61701 Salt mist corrosion  
 IEC 62716 Ammonia corrosion  
 EN 13501-5 B<sub>ROOF</sub> (t1) \*Flying sparks test"

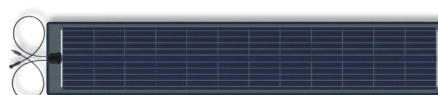
### WARRANTY

10-year product warranty  
 40-year linear performance warranty for building-integrated and building-applied installations

#### SCIENTIFIC PARTNERS AND ASSOCIATIONS



Phone / +43 2622 35035 0  
 E-Mail / office@das-energy.com  
 Web / www.das-energy.com



Ferdinand Graf von Zeppelin-Straße 18  
 2700 Wiener Neustadt, Austria