

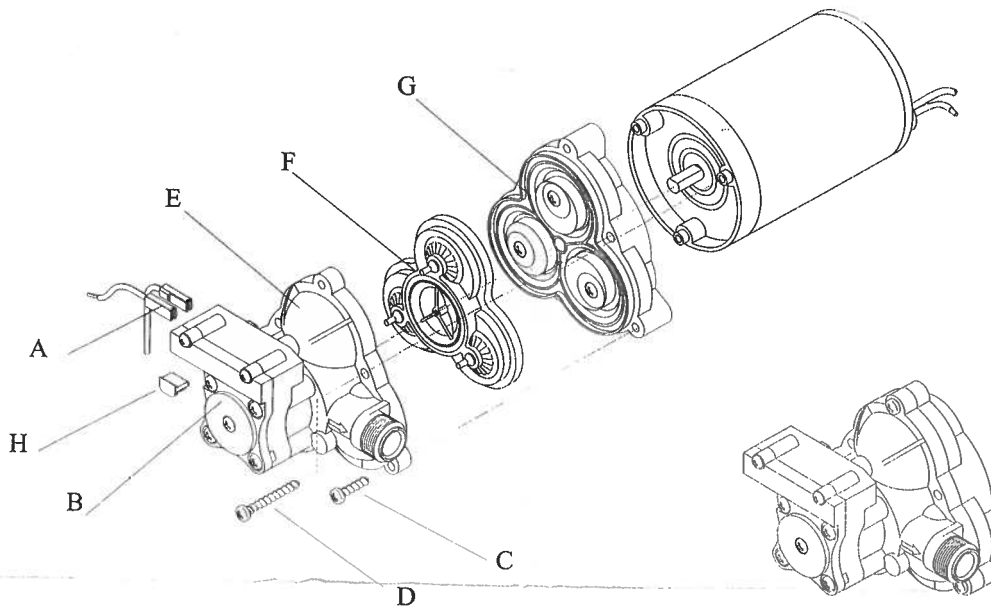
SHURflo®

VALVE ASSEMBLY KIT MODEL 2088 / 2090 PUMPS

EARLIER VERSIONS:

This kit fits **all** earlier versions of the model 2088. Do not be alarmed if this kit appears physically different than your existing upper housing/switch assembly.

NOTE: Before starting work, make certain that power to pump is off. Release liquid pressure on the outlet line of pump before performing maintenance. You may find it easier to remove the pump and work on a bench.



DISASSEMBLY:

1. Remove the three upper housing screws (C). Note: Do not remove the pressure switch screws.
2. Remove the three long screws (D). These screws hold the pump assembly to the motor. Note: If you work carefully, the lower housing will not separate from the motor assembly.
3. Remove the upper housing (E).
4. Remove the old valve assembly (F) from the upper housing.

ASSEMBLY:

1. Locate the new valve assembly (F) flush with the diaphragm (G) (Align groove in diaphragm with groove in valve assembly).
2. Place the upper housing (E) on top of the valve assembly (F).
3. Tighten the three outer screws (C).
4. Put the three long screws (D) in place and screw down until each touches, then tighten each screw securely.



SHURFLO

3545 Harbor Gateway South, Ste. 103, Costa Mesa, CA 92626, (800) 854-3218 www.shurflo.com

SHURFLO Europe, Middle East, Africa

Pentair Water Belgium bvba, Industriepark Wolfstee, Toekomstlaan 30, B-2200 Herentals, Belgium, +32-14-283500

All Pentair trademarks and logos are owned by Pentair, Inc. All other brand or product names are trademarks or registered marks of their respective owners. Because we are continuously improving our products and services, Pentair reserves the right to change specifications without prior notice. Pentair is an equal opportunity employer.

911-368 Rev H 06/12 ©Pentair, Inc. All rights Reserved.